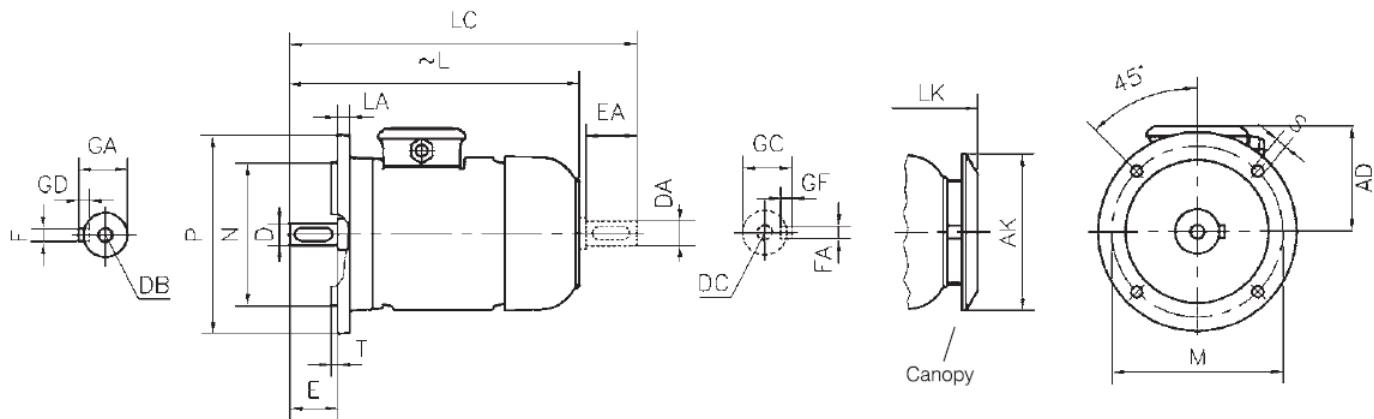


Wymiary silników serii AGM, AGM2E (IE2), AGM3E (IE3)

wznios 71-200

Montaż kołnierzowy - B5



wielkość mechaniczna	ilość biegunów	Wszystkie wymiary w mm																			
		Flange No.	ØM	ØN	ØP	Clearance hole		T	LA	AD	ØAK	L	LC	LK	E EA	DB ¹⁾ DC	ØD ØDA	GA GC	FxGD FxGF		
						No.	ØS														
71	2-4-6-8	FF 130	130	110	160	4	10	3.5	10	110	116	249	284	278	30	M5	14	16	5X5		
80	2-4-6-8	FF 165	165	130	200	4	12	3.5	12	118	151	279	324	308	40	M6	19	21.5	6X6		
90	2-4-6-8	FF 165	165	130	200	4	12	3.5	12	126	151	309	364	338	50	M8	24	27	8X7		
												L	4 ³⁾	334						389	363
														360						415	389
100	L	FF 215	215	180	250	4	14.5	4	15	135	189	376	442	413	60	M10	28	31	8X7		
												4 ⁴⁾	406	472						443	
112	M	FF 215	215	180	250	4	14.5	4	15	146	189	396	462	433	60	M10	28	31	8X7		
												4 ⁵⁾	425	487						458	
132	2-4-6-8	FF 265	265	230	300	4	14.5	4	20	168	239	460	546	497	80	M12	38	41	10X8		
												S	498	584						535	
												M	523	614						560	
160	L	FF 300 ²⁾	300	250	350	4	18.5	5	20	225	303	600	716	657	110	M16	42	45	12X8		
												M	644	760						701	
180	L	FF 300 ²⁾	300	250	350	4	18.5	5	20	241	303	657	773	714	110	M16	48	51.5	14X9		
												M	657	773						714	
200	L	FF350 ²⁾	350	300	400	4	18.5	5	20	275	370	747	865	803	110	M20	55	59	16x10		
Tolerances				j6																m6	